

# AQUASERV



AQUASERV brings together 40 partner entities from six European research infrastructures to provide innovative and customized **research services** and **training** in Blue Bioeconomy.

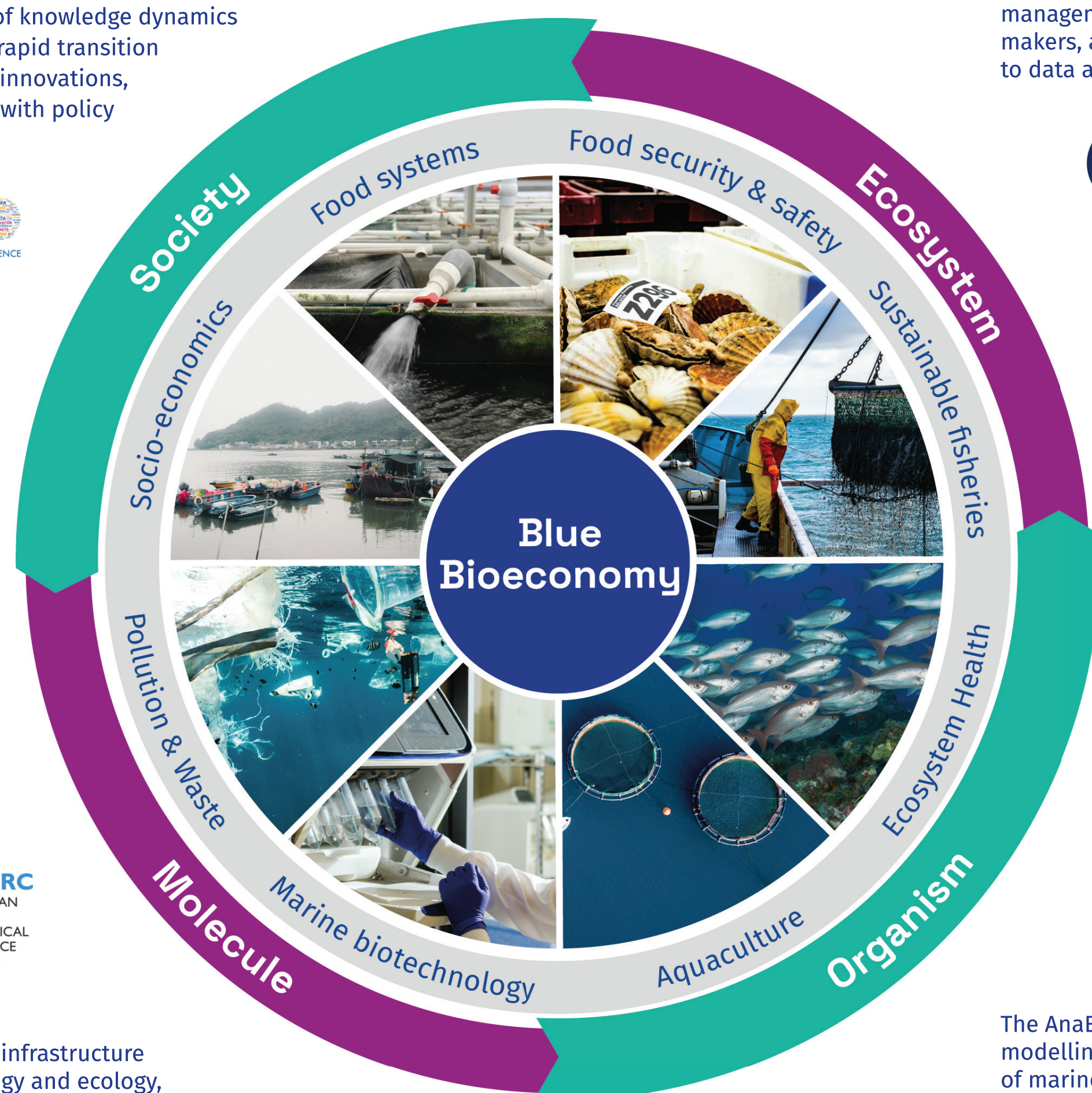


MetroFood is a research infrastructure dedicated to food processing, quality, traceability and authenticity, environmental safety, and human health.

RISIS aims to develop a deeper understanding of knowledge dynamics to promote the rapid transition from science to innovations, closely working with policy and society.



The ICES provides fisheries management advice to policy makers, as well as access to data and training.



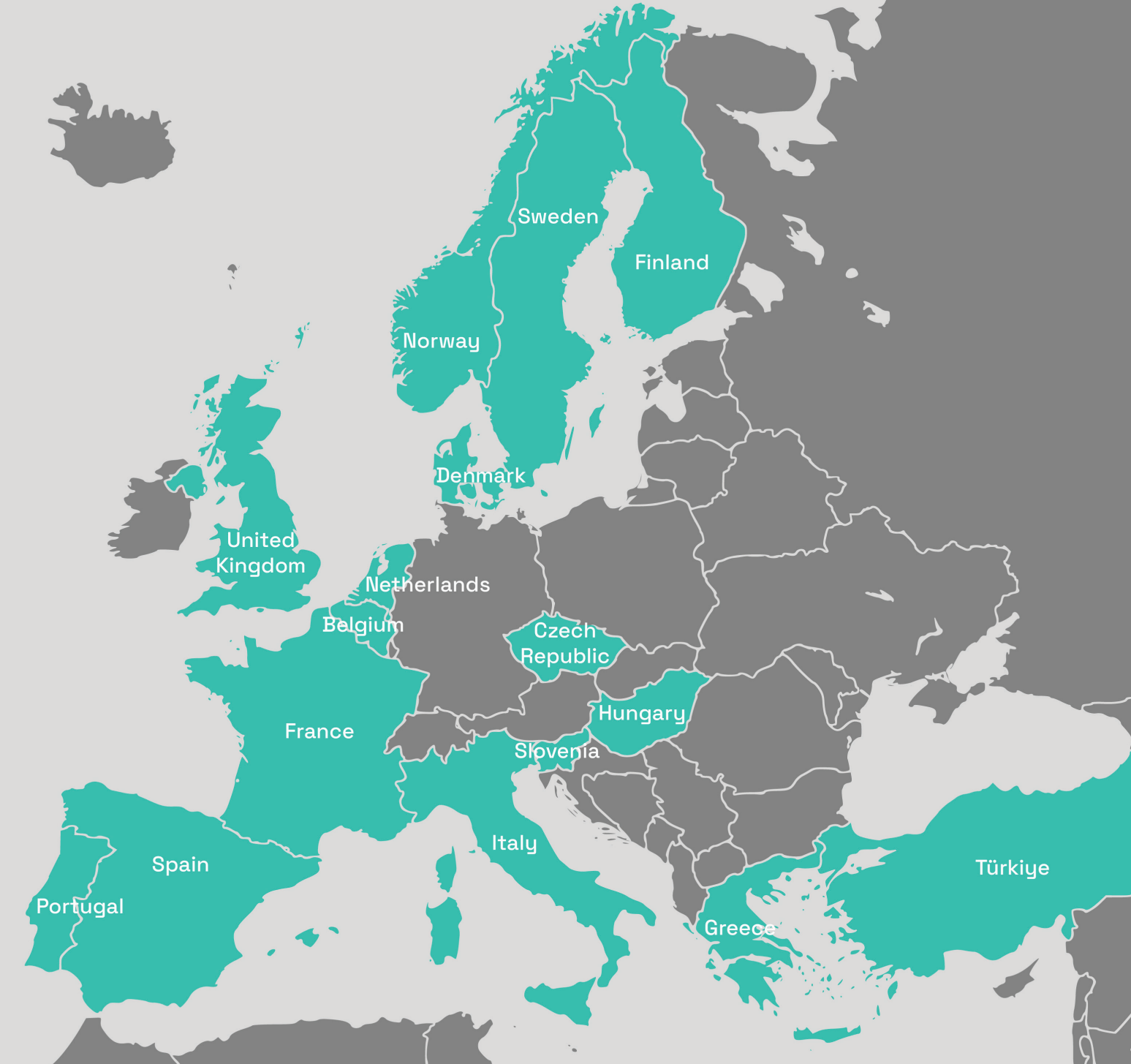
The EMBRC-ERIC is the European infrastructure for marine biology and ecology, including bioprospecting.



The AnaEE-ERIC integrates modelling and experimentation of marine and freshwater ecosystems, including fisheries.



AQUAEXCEL is the established aquaculture research infrastructure in Europe. It runs several projects, covering all aspects of fish, mollusc, and algae aquaculture.



## AQUASERV will...

- create a **sustainable** international research infrastructure network.
- provide unique and cutting-edge **customised services**.
- offer **centralised and efficient** access to AQUASERV services.
- speed up **knowledge transfer** through joint research and training.
- promote and implement **open science** policies.
- complement and **synergise** with relevant EU initiatives.
- **raise awareness** for joint European research and innovation and move the Blue economy forward.

## What type of services?

AQUASERV includes transnational access (TAs) and virtual Access (VAs) to research infrastructures. TAs include free access to the services offered in the project, on-site in the different institutions or remotely. VAs include free access to databases from your own computer.

## Who can use our services?

AQUASERV TAs and VAs are accessible for researchers from academia and industry within and beyond Europe.

## Where can I use AQUASERV?

TAs and VAs can be accessed in several European countries, as displayed in our map of partners. Researchers can only apply for services outsided their home country.

## How does it work?

1. Contact the access provider
2. Application via our application portal
3. Evaluation of the application
4. Implementation of TAs or VAs
5. Reporting

## Follow us on:



[aquaserv-ri.eu](https://aquaserv-ri.eu)



[AQUASERV.BSKY.SOCIAL](https://AQUASERV.BSKY.SOCIAL)



[AQUASERV](https://AQUASERV)



[aquaserv@ualg.pt](mailto:aquaserv@ualg.pt)



**Project Coordinator:** Canário, A.<sup>1,2</sup>  
**Project Manager:** Aranda da Silva, A.<sup>1</sup>

<sup>1</sup>Centro do Ciências do Mar do Algarve <sup>2</sup>Universidade do Algarve

**Funded by the European Union**  
 This project has received funding from the European Union's HORIZON Research and Innovation Actions under grant agreement N° 101131121.